

VIEW 1

Front of Greeting Card

Instructions:

Use this document to layout your greeting card the way you want the graphics to appear.

Extend all artwork to the edge of the document. If you are printing with a bleed make sure to extend your artwork until the edge of the bleed dimensions.

Keep in mind many printers do not print to the edge of the document and will add a white border to the page. This means you are printing without bleed. If this is the case, you need to keep all important information within the [Blue line](#) to account for the white border.

VIEW 2

Instructions:

This is the page where you lay out your popup.

You need to design the popup so that all the important information is within the blue line.

However, you need to extend your design to the red line to account for an 1/8in (.125in) bleed.

We recommend that you create the layout so that bleed works into the surrounding background of the greeting card.

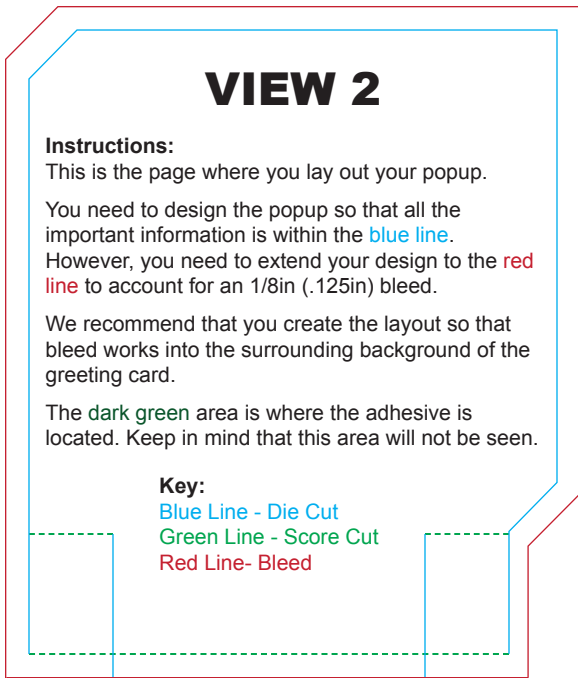
The dark green area is where the adhesive is located. Keep in mind that this area will not be seen.

Key:

Blue Line - Die Cut

Green Line - Score Cut

Red Line- Bleed





VIEW 3

Instructions:

This is the main content area of the greeting card.

Remember if you are printing without bleed, it is important to keep all information within the **Blue line**, so no informatin is lost.

The **dark green** area is where the adhesive is located. Keep in mind that this area will not be seen.

VIEW 4

Instructions:

This is the back of the greeting card.

Remember if you are printing without bleed, it is important to keep all information within the [Blue line](#), so no informatin is lost.